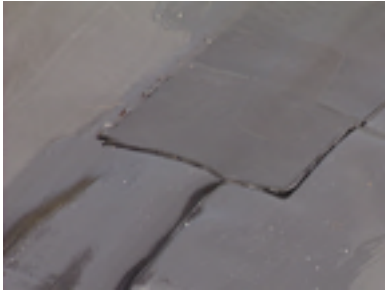


Firestone EPDM Geomembrane Installation Detail 11

Priming Cover Strip Tape for Continuation to the Next Roll



Step 1- Ensure the liner is dry and free of mud and other contaminants.



Step 2- Prime the final 2.00" to 4.00" (5.08 to 10.16 cm) of Cover Strip Tape and overlap the second roll of this tape to the edge of the primed area.



Step 3- Roll the tapes to mate them together.

Note: A similar methodology can be used when continuing on with 3.0" (7.62 cm) Splice Tape

Firestone

SPECIALTY PRODUCTS

Firestone EPDM Geomembrane Installation Detail 11 (Con't) **Priming Cover Strip Tape for Continuation to the Next Roll**

This Detail featured these Firestone Products:

Product

- Firestone EPDM Geomembrane
- 6" (15.24 cm) QuickSeam™ Cover Strip
- QuickPrime™ Plus Primer
- QuickScrubber™
- Hand Roller

Item #

Varies By Size
W56RAC1693
or
W56RAC1616
or
W563587041
or
W563587044
W563582045
W563582023